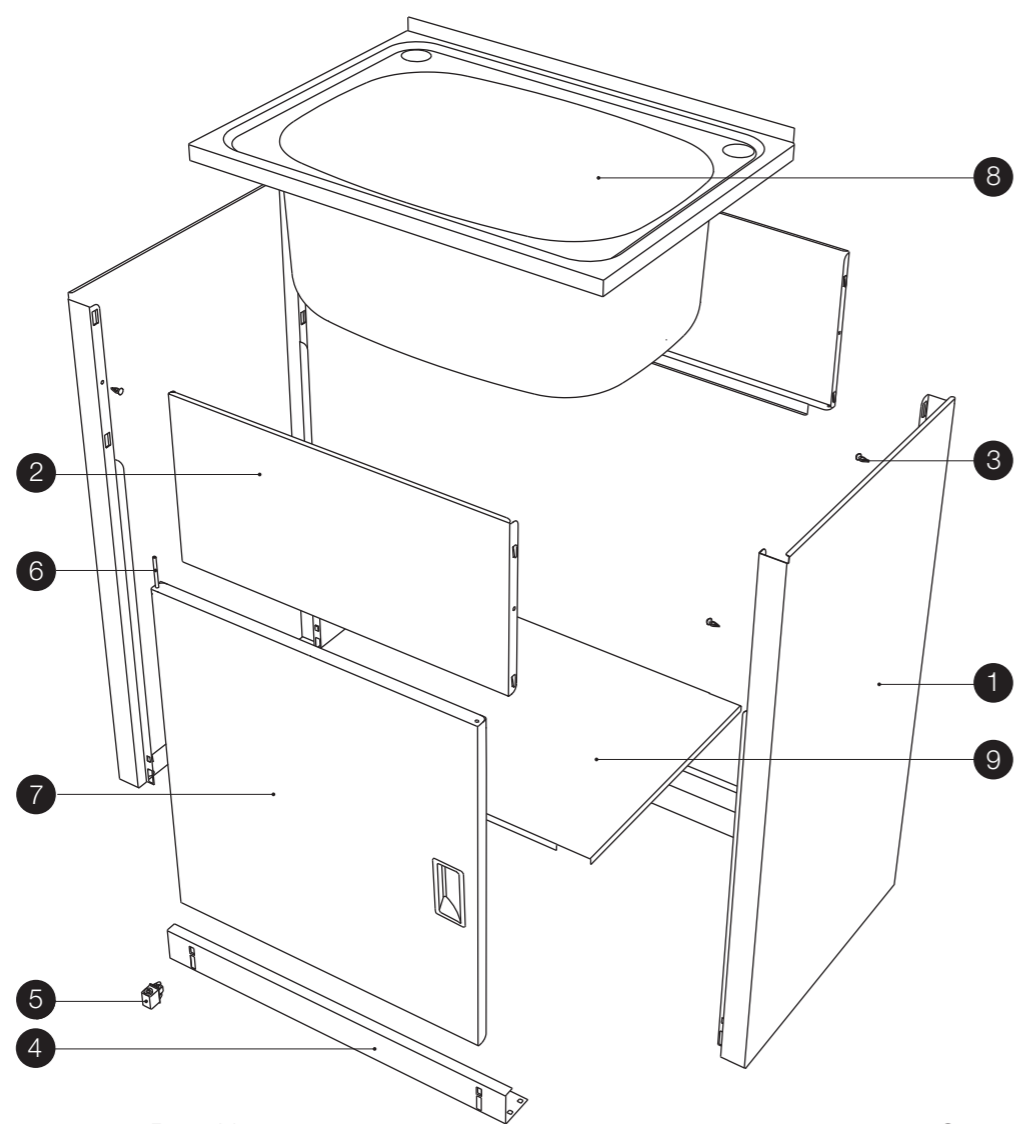


CLARK Flat Pack - Laundry Tubs & Tub Cabinet

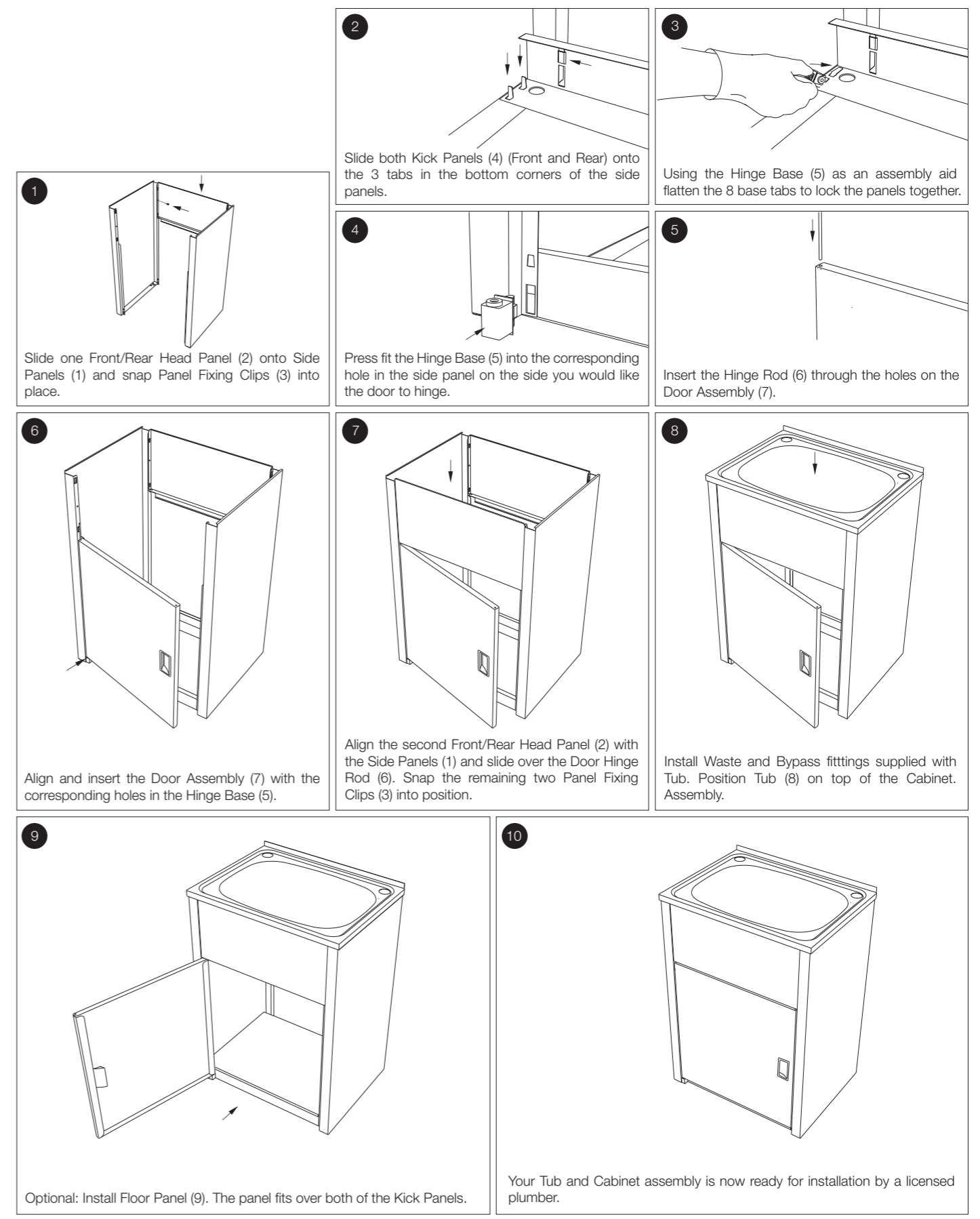
Suitable for item codes: 126001F, 126111F, 127111F, 128011F, 128111F, 129011F, 12FS35C, 12R45S



No.	Parts List:	Qty
1	Side Panel	2
2	Front/Rear Head Panel	2
3	Panel Fixing Clips	4
4	Front/Rear Kick Panel	2
5	Hinge Base	1
6	Door Hinge Rod	1
7	Door Assembly (Includes Door, Handle and Magnetic Strips)	1
8	Tub	1
9	Floor Panel (Optional)	1

Naming parts and assembly sequence remain the same for other versions - part quantities may differ.

Flat Pack Tub & Cabinet Assembly Instructions
CAUTION: Whilst all care is taken during the manufacture of this product there may be sharp edges on some of the steel components. It is, therefore, recommended that to prevent injury suitable gloves are worn whilst assembling this product.



The Cabinet has been manufactured from quality materials. To ensure you receive the Cabinet in the same quality that it left our plant, it has been covered with a protective plastic material. Please remove this before assembly.
NOTE: The Tub and Cabinet shown being assembled in the following instructions is the 45L version. If you have purchased other versions, the part names and assembly sequence remain identical.



GWA
Bathrooms & Kitchens

Caroma Industries Limited
 ABN 35 000 189 499
 1 Melito Court, Prestons NSW 2170
 National Customer Call Centre
13 14 16
caroma.com.au



New Zealand
 National Customer Call Centre
09 279 2700
caroma.co.nz